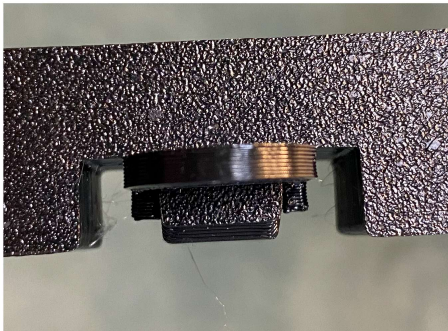


Tinkerframe ZM12 lid

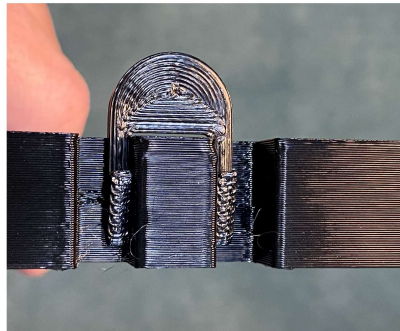
Designed and sold by C&M Terrariums

Assembly

1. With your lid right side up, take the 2 locking U-tabs from the bag. Place the tab with the flat side facing the center of the lid over the protrusion in the center of the lock space on the lid (Pic 1). Push it down until it clicks into place (Pic 2). There are two rounded nubs on the locking tab that will click into two round holes on the lid, making a hinge. Repeat on the other side.
2. Your lid is now complete. If you bought any accessories, continue to step 3.
3. If you purchased a misting nozzle adapter or feeding cap, you will need to unscrew the cap in any hole you want to use. This can be done by grasping it on either side and turning it, or using a coin in the groove underneath.
4. Once the hole is empty, screw your accessory into it.
5. If you purchased a solid vent kit and want to block more airflow, place the vent blocker into the vent you want to block and secure it by using the small T tabs in the remaining key holes. Push the tab into the hole with your finger and then push the head of the tab the rest of the way in using a tool until they are flush against the insert.



Pic 1



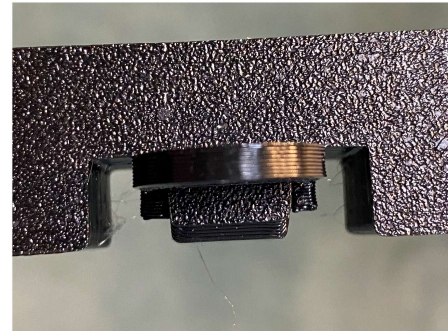
Pic 2

Tinkerframe ZM12 lid

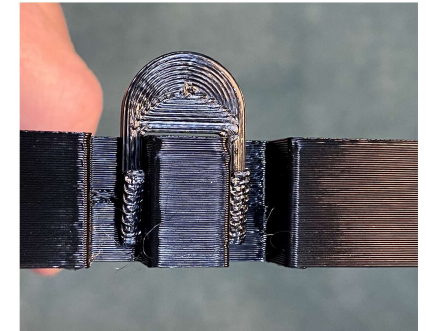
Designed and sold by C&M Terrariums

Assembly

1. With your lid right side up, take the 2 locking U-tabs from the bag. Place the tab with the flat side facing the center of the lid over the protrusion in the center of the lock space on the lid (Pic 1). Push it down until it clicks into place (Pic 2). There are two rounded nubs on the locking tab that will click into two round holes on the lid, making a hinge. Repeat on the other side.
2. Your lid is now complete. If you bought any accessories, continue to step 3.
3. If you purchased a misting nozzle adapter or feeding cap, you will need to unscrew the cap in any hole you want to use. This can be done by grasping it on either side and turning it, or using a coin in the groove underneath.
4. Once the hole is empty, screw your accessory into it.
5. If you purchased a solid vent kit and want to block more airflow, place the vent blocker into the vent you want to block and secure it by using the small T tabs in the remaining key holes. Push the tab into the hole with your finger and then push the head of the tab the rest of the way in using a tool until they are flush against the insert.



Pic 1



Pic 2